

drawing & painting

How Did the Invention of the Camera Change Art?

Self-Portrait

For this unit, we will be looking at how the camera redefined the purpose of art, and how art underwent a series of rapid and profound transformations that differed from the ideas of the classical period.

elements: COLOR, VALUE, TEXTURE

principles: CONTRAST, EMPHASIS, PROPORTION/SCALE

Your grade breaks down as follows:

Envision, Stretch & Explore: *Self-Portrait Planning*

Willingness to push and challenge one's self through use of a creative photo pose, painting style, and overall composition; research essay and evidence of planning

Engage & Persist: *In-Class Effort*

Attendance, effort & work ethic, prepared, on task, and focused during class, overcoming mistakes and setbacks, follow-through

Develop Craft: *Painting Technique*

Use of grid to translate reference photo or sketch, manipulation of perspective & proportion based on chosen artist, sense of lighting, likeness, use of materials, application of brushstrokes, color mixing

Express: *What You Have to Say*

Short written explanation of your self-portrait, and how you feel the style, pose, and lighting communicate some aspect of your personality

1885



Max Beckmann
Self Portrait with Cigarette, 1923

1950 AD

drawing & painting

How Did the Invention of the Camera Change Art?

Self-Portrait

THE PROJECT:

Pretend you have “hired” a well-known Modern artist to paint your self-portrait, one that both captures your physical likeness and expresses some aspect of your personality.

REQUIREMENTS:

- Finished self-portrait painting based on reference photo taken in class and is recognizable as you
- Reference photo taken using a three-quarters view
- Your hand(s) are in the photo, posed with an expressive gesture
- The lighting in the photo accentuates that aspect of your personality you are trying to express
- Self-portrait painted in the style of a recognized Modern artist, as if that artist was the one painting you (for this assignment, choose a Modern artist whose most influential work was created roughly 1885-1950)

PROJECT OUTLINE

01

Take notes during our overview of Modern art
Determine your pose and have reference photo taken
Begin choosing which Modern artist to “hire”

02

Turn in project proposal, which will include a write up, a reference photo, and a printed example of your chosen artist’s work

03

Crop and grid your reference photo (or a stylized sketch), then scale up your image for painting

04

Complete the color exercise, the underpainting for your self-portrait, then go for it!

1885



Marc Chagall
Self-Portrait With Seven Digits, 1913

1950 AD

drawing & painting

How Did the Invention of the Camera Change Art?

Modernist Self-Portrait

For this unit, we will be looking at how the camera redefined the purpose of art, and how art underwent a series of rapid and profound transformations that differed from the ideas of the classical period.

STEP 01: “Hire” a Modern artist

The beginnings of Modernism, starting roughly with the Impressionist movement, saw an enormous change in the way artists approached the definition of and their way of making art. Choose an artist whose **main body of work** fell between 1885-1950. **DO NOT** choose “pop” artists. Have your choice confirmed and approved by me before proceeding.

Using the artist you select to “commission” for your self-portrait, research that person then address the following questions in a typed essay:

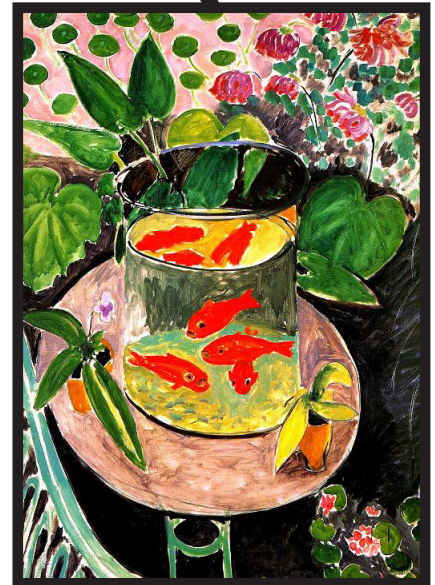
- Where did this artist live and work? How was this artist trained? Were they self-taught, did they attend a formal academy, or something else? Would you describe their artistic education, or the school they attended, as “Classical” (i.e., traditional for that time)? Did they embrace or rebel against their training?
- How did this artist become associated with or begin making the art they are now famous for? From what other artist(s) or source(s) did they draw their inspiration (e.g. African art, Japanese art, other artists, etc?)
- Describe the distinctive characteristics of your artist’s style—describe what makes it unique and recognizable (print out—as large as possible on an 8.5”x11” paper—a **large resolution, color**, example of a **portrait** by them that represents the style you are going to use for your own painting). You will need this for painting.
- In this class, a work of art you produce is graded in multiple ways. Using our categories of DEVELOP CRAFT (skills and techniques), ENVISION (originality, inventiveness, innovation), and EXPRESS (getting across a specific idea), which of these do you think your artist was most interested in? Why?

400+ words, typed, spelling and grammar count!

DRAFT DUE: E-mail to me by end of class on WED

gbcарman@seattleschools.org

1885



Henri Matisse
The Goldfish Bowl, 1912

1950 AD